

2025-2026



INDUSTRIAL PC

MONITOR

BOX PC

CUSTOM PC

www.panel.it



MADE IN ITALY



Catalog Index

1	THE COMPANY	14-15	VESA PC
2-3	➤ OUR DISTINCTIVE FEATURES ➤ TRUSTED BY LEADERS	16-17	INOX PC
4-5	MADE IN ITALY, OPERATING WORLDWIDE	18-19	BOX PC
6-7	CUSTOM SOLUTIONS	20-21	MONITOR
8-11	PANEL PC	22-23	REMOTED MONITOR
12-13	ARM PC	24	SUPPORT AND ASSISTANCE

The Company

Panel was founded in 1997 as an industrial automation company, capturing a specific market need: **the need for specialization in human-machine interface**. Over the next twenty years, Panel has gradually consolidated itself as a point of reference in the **Human-Machine Interface** sector at an **international level**.

Web site
www.panel.it

Contacts
+39 0536 808519
info@panel.it



Our values



Reliability

With thousands of installations in diverse industrial sectors, Panel's reliability is confirmed by the trust of our customers, which are some of the most famous brands in the world.

A solid partner, always ready to support you with quality and professionalism.



Continuity

Panel can guarantee continuity of supply over time. A Panel product is an investment protected by an assistance and maintenance service that makes it last a long time. Industrial PCs designed to guarantee uninterrupted operations, even in the most demanding contexts.



Flexibility

In Panel we offer customized solutions for the specific needs of each industrial project, even the most challenging. Flexibility also means the ability to listen to the customer, promptness in assembly on request and rapid delivery anywhere in Italy and Europe.



Innovation

At the heart of our commitment: designing industrial PCs that anticipate the challenges of the future, ensuring excellent performance and total adaptability. Choosing our PCs means investing in quality and technology that evolves with your business.



Our expertise

We offer **cutting-edge technology solutions**, designed to withstand the most extreme industrial conditions.

Our experience and commitment to reliability and customization guarantee your business a **superior performance and continuous support**.

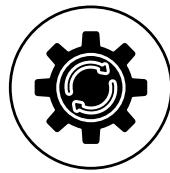
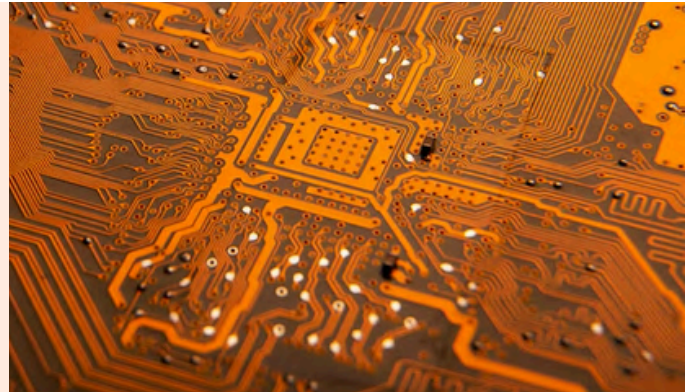
- ✓ Customized solutions
- ✓ Stability and quality
- ✓ Dedicated consultants
- ✓ High performances

Our Distinctive Features

Top Quality Components

Panel PCs and monitors have **the best components on the market**.

High quality standards are synonymous with efficiency, durability and therefore reliability.



Testing Process

Each product is subjected to **meticulous and rigorous testing**, designed to guarantee impeccable performance even in the most extreme conditions and to withstand temperatures, vibrations and heavy loads, ensuring reliability.

Made in Italy

All Panel products are Made in Italy. **From design to production, everything is done in Italy**, following the best construction parameters by our experts.



Assistance in Italy

Assistance in Italy means **flexibility and speed**: we respond to every need, guaranteeing **timely interventions to minimize downtime**.

Support always at hand, **close to you**.

Custom Projects

We also design and offer **customized solutions for the specific needs** of each industrial project.

Every detail is designed to optimize performance.



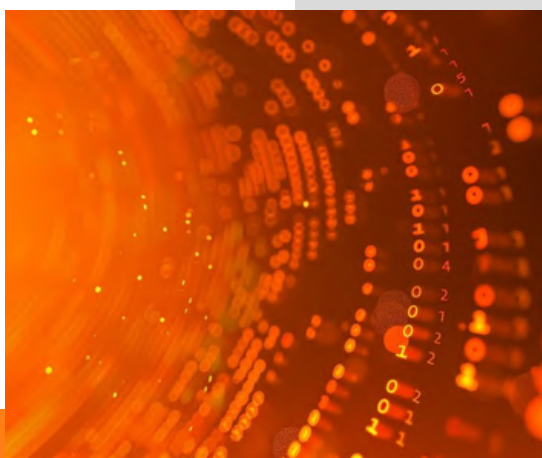
Trusted by Leaders

Panel is **the reference technology partner for leading companies in the industry, in Italy and internationally.**

Our industrial PCs fuel the innovation of global companies, which choose us for the reliability, flexibility and **certified quality** of our solutions.

Collaborating with the big ones imposes **extremely high standards** on us: a daily challenge that we face with skill, vision and passion.

Where excellence is the rule, Panel is the technology you can rely on.



Made in Italy, operating Worldwide



With a **sales network rooted in Italy** and **constantly expanding**, Panel consolidates its presence also in Europe, now in **Spain** and **Slovenia**.

Our ability to support **international customers** and to adapt to the needs of different markets makes us the ideal partner for industrial PC solutions all over the world.

We expand our network every day to be ever closer to those who choose innovation, wherever they are.



Italian technology, international standards

Panel industrial PCs are **chosen by numerous international companies** because they are designed to meet the regulations and technical needs of foreign markets.

Most of our systems are already successfully used abroad, demonstrating the construction quality and full compliance with global standards.

A significant portion of our production is exported for these very reasons: **reliability, quality** and **certifications** – including **UR/CSA** – which make our systems perfectly suitable for use in international industrial plants, including the **United States** and **Canada**.

Panel is synonymous with Italian technology that works safely and successfully in the most demanding industrial contexts in the world.



The background of the slide is a light gray abstract network pattern. It consists of numerous small, semi-transparent circular nodes connected by thin, light gray lines, creating a complex web-like structure that spans the entire page. The density of the connections is higher in the top and bottom sections, framing the central text.

Customizations & Products

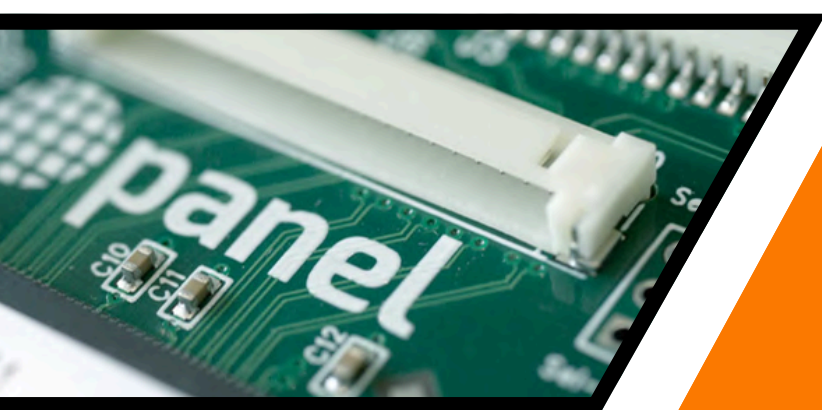
Custom solutions

Made for your needs

The experience gained over the years of activity, the wide range of products, and an extremely qualified technical/commercial team, makes Panel products the ideal solution for various applications.

We offer our customers solutions based on specific requests and for any work environment.

Our customizations offer the possibility of creating industrial PCs and box PCs perfectly adapted to the unique needs of your sector.

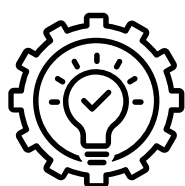


From mechanical design to component selection, our team offers qualified and rapid services.

Thanks to our experience, we can create solutions that integrate perfectly into your operating environment, to optimize processes and to support the growth of your business.



Imagine your ideal solution...



...and we'll build it for you!

Custom front panels

User-friendly graphics

The wide range of products, the flexibility of configuration, and the very high reliability, make Panel products the ideal solution for various applications, industrial and non-industrial, even in particularly harsh environments.

Panel also innovates in style. Thanks to an exclusive technology, customers can customize the front panel of their PCs and monitors with graphics, logos, colors and symbols making them unique and identifying their company. A service created internally, guaranteed in short times and also available for orders of a few units.

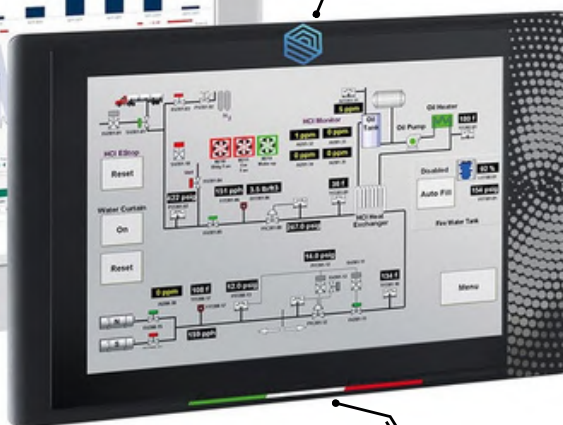


Logo



Custom graphics

Logo



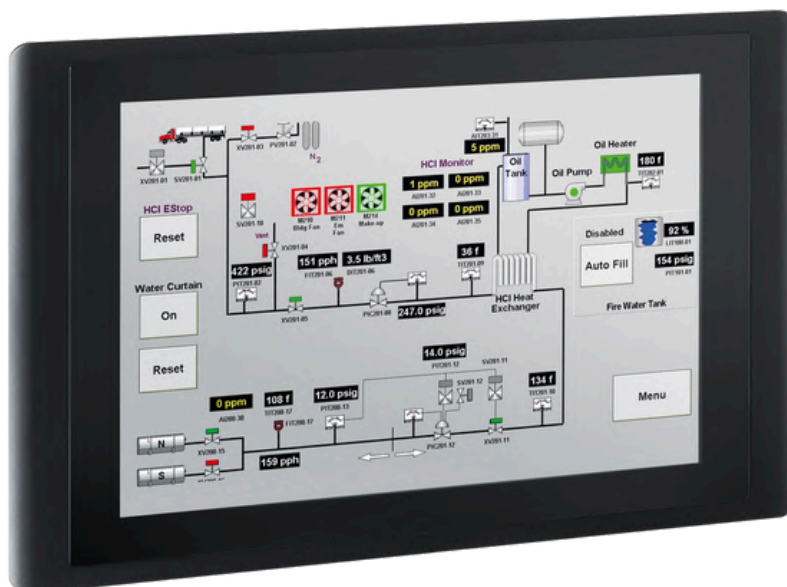
Symbols, QR codes and much more

Custom graphics



Capacitive Touch Screen

- 10.1" to 21.5" Display
- Capacitive touch screen
- CPU Intel N97 and Core Ultra 5 125H
- Internal power supply 24VDC or 110-230 VAC
- IP66 protection grade
- Operating temperature 0-50°C ; 0-45°C
- Customizable panel
- CE, cURus certification



FANLESS **Industrial PCs for panel mounting** in compact version and equipped with displays from 10.1" to 21.5", both in compact and Widescreen form. Also Full HD resolution.

Ideal for industrial environments, even in the most extreme. Thanks to the flexibility of configuration, the **PSG** series can be supplied with a wide range of CPUs, making them the ideal solution for industrial automation applications and beyond.

All configurations can include internal 24 VDC or 110-230 VAC power supply. The front panel, with **IP66** protection rating, is made of **black silk-screened tempered glass with an aluminum edge** and a **multi-touch rear-projected capacitive touch screen**.



Removable SSD



New dissipation system



True Flat multi-touch

PSG2 Series

PRODUCT ID	FD	FE
DISPLAY	10.1" 1280x800(FD) 12.1" 800x600 1024x768 15" 1024x768 15.6" 1366x768 Wide 1920x1080 Wide 17" 1280x1024 18.5" 1366x768 Wide 1920x1080 Wide 21,5" 1920x1080 Wide	
TOUCH TYPE	Projected capacitive multi touch	
CPU	Intel N97	Intel Core Ultra 5 125H
OS SUPPORTS	Windows 10 64 bit Windows 11 64 bit Linux	
STORAGE	1x 2.5" SSD	
EXPANSION SLOTS	1x Full Mini PCIe 1x M.2	2x M.2
SERIAL PORTS	Up to 2x RS232/422/485 Up to 2x RS232	Up to 2x RS232/422/485 Up to 1x RS232
USB PORTS	Up to 2x USB 3.2 Up to 2x USB 2.0	2x USB 3.2 2x USB 2.0 2x USB 3.2 (Type C)
AUDIO I/O	1x Line-out	N/A
VIDEO OUTPUT	2x HDMI	1x HDMI 1x DP
LAN PORTS	2x RJ45 2.5 Gigabit LAN	1x RJ45 2.5 Gigabit LAN 1x RJ45 Gigabit LAN
POWER SYSTEM	24 VDC 110-230 VAC *	
OPERATING TEMPERATURE	0-50°C ; 0-45°C with Intel Core Ultra 5	
FRONTAL PANEL PROTECTION	IP66	
SAFETY	CE ; cURus	

* Except for 10.1"



Resistive Touch Screen

- 8" to 21.5" Display
- Resistive touch screen
- CPU Intel N97 and Core Ultra 5 125H
- Internal power supply 24VDC or 110-230 VAC
- IP66 protection grade
- Operating temperature 0-50°C ; 0-45°C
- Customizable panel
- CE, cURus certification



CE cURus RoHS Windows Embedded Linux



FANLESS industrial PCs for panel mounting in compact version and equipped with displays from 8" to 21.5", both in 4:3 and 16:9 versions, and Full HD resolution.

Ideal for industrial environments, even in the extreme ones. Thanks to the flexibility of configuration, the **PSR** series can be supplied with a wide range of CPUs, making them the ideal solution for industrial automation applications and beyond.

All configurations can include internal 24 VDC or 110-230 VAC power supply. The front panel, with **IP66** protection rating, is made of **anodized aluminum**, with USB port and **5-wire resistive touch screen**.



PSR1 Series

PRODUCT ID	FD	FE
DISPLAY	8" 800x600(FD) 10.1" 1024x600(FD) Wide 10.4" 800x600 12.1" 800x600 1024x768 15" 1024x768 15.6" 1366x768 Wide 1920x1080 Wide 17" 1280x1024 18.5" 1366x768 Wide 1920x1080 Wide 21.5" 1920x1080 Wide	
TOUCH TYPE	5 Wire resistive touch	
CPU	Intel N97	Intel Core Ultra 5 125H
OS SUPPORTS	Windows 10 64 bit Windows 11 64 bit Linux	
STORAGE	1x M.2 SSD* 1x 2.5" SSD	1x 2.5" SSD
EXPANSION SLOTS	1x Full Mini PCIe 1x M.2	2x M.2
SERIAL PORTS	Up to 2x RS232/422/485 Up to 2x RS232	Up to 2x RS232/422/485 Up to 1x RS232
USB PORTS	2x USB 3.2 3x USB 2.0	2x USB 3.2 3x USB 2.0 2x USB 3.2 (Type C)
AUDIO I/O	1x Line-out	N/A
VIDEO OUTPUT	2x HDMI	1x HDMI 1x DP
LAN PORTS	2x RJ45 2.5 Gigabit LAN	1x RJ45 2.5 Gigabit LAN 1x RJ45 Gigabit LAN
POWER SYSTEM	24 VDC 110-230 VAC **	
OPERATING TEMPERATURE	0-50°C ; 0-45°C with Intel Core Ultra 5	
FRONTAL PANEL PROTECTION	IP66	
SAFETY	CE ; cURus	

* Only for 8" and 10.1"

** Except for 8" and 10.1"

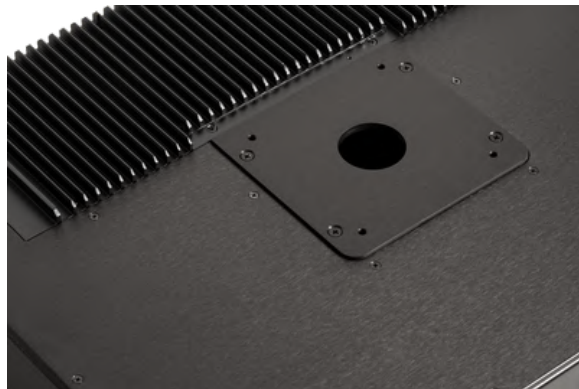


Capacitive Touch Screen

- 15.6" to 21.5" Display
- Capacitive touch screen
- CPU Intel N97 and Core Ultra 5 125H
- Internal power supply 24VDC
- Full IP65 protection degree
- Operating temperature 0-50°C ; 0-45°C
- Customizable panel
- Button panel up to 12 Standard Ø 22 elements
- VESA 100 Standard Suspension Mounting



Available in suspended Monitor version
PAM2 Series



TOTAL PROTECTION - FANLESS industrial PCs and monitors, extremely compact. **IP65** on the entire machine body and therefore suitable even for the most demanding industrial environments.

BUTTON PANEL Ø 22 - The button panel is designed for **up to 12 standard Ø 22 elements** to be wired and not on an electronic circuit, allowing maximum freedom of choice and interchangeability.

STANDARD VESA - The suspension mounting provision is both from above and from below through a **STANDARD VESA 100** attachment, in order to guarantee maximum freedom in the choice of the suspension system and without constraints on proprietary attachments.

PAC2 Series

PRODUCT ID			FD	FE
DISPLAY			15.6" 1366x768 Wide 1920x1080 Wide 18.5" 1366x768 Wide 1920x1080 Wide 21.5" 1920x1080 Wide	
TOUCH TYPE			Projected capacitive multi touch	
CPU			Intel N97	Intel Core Ultra 5 125H
OS SUPPORTS			Windows 10 64 bit Windows 11 64 bit Linux	
STORAGE			1x 2.5" SSD	
EXPANSION SLOTS			1x Full Mini PCIe 1x M.2	2x M.2
SERIAL PORTS			Up to 2x RS232/422/485	
USB PORTS			2x USB 3.2 2x USB 2.0	2x USB 3.0 2x USB 2.0 2x USB 3.2 (Type C)
AUDIO I/O			1x Line-out	N/A
VIDEO OUTPUT			2x HDMI	1x HDMI 1x DP
LAN PORTS			2x RJ45 2.5 Gigabit LAN	1x RJ45 2.5 Gigabit LAN 1x RJ45 Gigabit LAN
POWER SYSTEM			24 VDC	
OPERATING TEMPERATURE			0-50°C ; 0-45°C with Intel Core Ultra 5	
KEYS			Up to 12 Ø 22 elements	
PROTECTION GRADE			Full IP65	
SAFETY			CE	

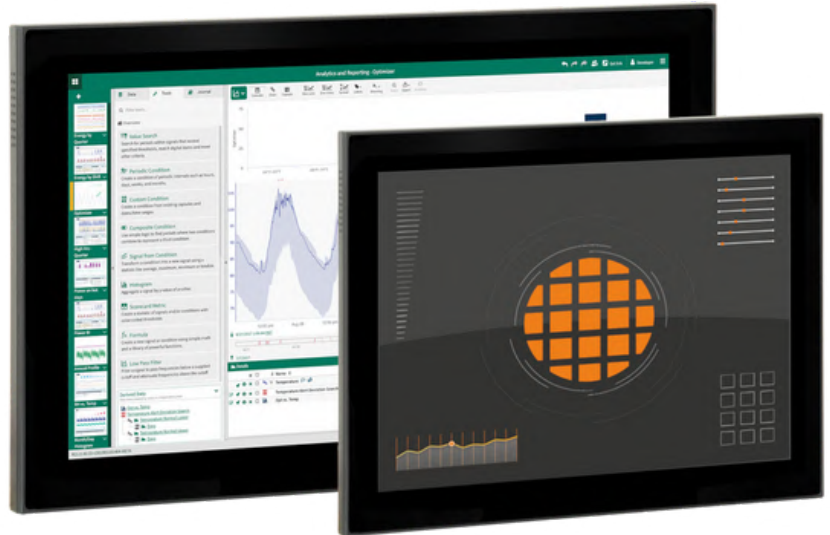
PAM2 Series

PRODUCT ID			
DISPLAY			15.6" 1366x768 Wide 1920x1080 Wide 18.5" 1366x768 Wide 1920x1080 Wide 21.5" 1920x1080 Wide
TOUCH TYPE			Projected capacitive multi touch
POWER SYSTEM			24 VDC
KEYS			Up to 12 Ø 22 elements
VIDEO INPUT			1x VGA 1x DVI
OPERATING TEMPERATURE			0-50°C
PROTECTION GRADE			Full IP65
SAFETY			CE



Capacitive - Resistive Touch Screen

- 15" to 21.5" Display
- Capacitive or resistive touch screen
- CPU Intel N97
- Internal power supply 24VDC or 110-230 VAC
- Degree of protection IP30*
*IP 66 on front panel
- Operating temperature 0-50°C
- Customizable panel
- VESA 100 Mounting



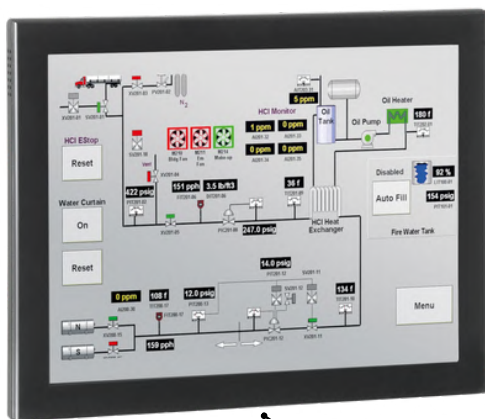
CE ✓RoHS Windows Embedded Linux



Industrial PCs for VESA mounting, available with multi-touch or resistive rear-projected capacitive touch screen.

Versatile and practical, these PCs can be easily integrated into existing systems thanks to VESA support. Extremely compact and completely **FANLESS**, they are also available in Widescreen form. Resolutions also Full HD.

The VESA series PCs are equipped with the latest generation CPUs, capable of providing high performance which, combined with very low consumption, are the ideal solution for industrial automation applications and beyond.



PVR Series



Resistive



PVG Series



Capacitive

PVR Series

PVG Series

PRODUCT ID	FD	FD
DISPLAY	15" 1024x768	15.6" 1366x768 Wide 17" 1280x1024 Wide 18.5" 1366x768 Wide 1920x1080 Wide 21.5" 1920x1080 Wide
TOUCH TYPE	5 Wire resistive touch	Projected capacitive multi touch
CPU	Intel N97	
OS SUPPORTS	Windows 10 64 bit Windows 11 64 bit Linux	
STORAGE	1x 2.5" SSD	
EXPANSION SLOTS	1x Full Mini PCIe 1x M.2	
SERIAL PORTS	Up to 2x RS232/422/485 Up to 2x RS232	
USB PORTS	2x USB 3.2 2x USB 2.0	
AUDIO I/O	1x Line-out	
VIDEO OUTPUT	2x HDMI	
LAN PORTS	2x RJ45 10/100/1000 Gigabit LAN	
POWER SYSTEM	24 VDC 110-230 VAC	
OPERATING TEMPERATURE	0-50°C	
PROTECTION GRADE	IP30 *	
SAFETY	CE	

* IP66 On front panel



Capacitive Touch Screen

- 15" to 18.5" Display
- Capacitive touch screen
- CPU Intel N97
- Internal power supply 24VDC or 110-230 VAC
- Full IP67 protection grade
- Operating temperature 0-50°C
- Customizable panel
- Entirely in AISI 304 stainless steel



Fully FANLESS industrial PCs, made of **AISI 304 stainless steel** with **total IP67 protection**, for **VESA** mounting.

Extremely compact, they are equipped with **LED displays** and are available with a **multitouch rear-projected capacitive touch screen**.

Thanks to the multiple configurations available and latest-generation CPUs, capable of providing high performance combined with very low consumption, they are the **ideal solution for food, pharmaceutical and chemical applications**.



PVS Series

PRODUCT ID	FD
DISPLAY	15" 1024x768
	15.6" 1366x768 Wide
	1920x1080 Wide
	17" 1280x1024
	18.5" 1366x768 Wide
	1920x1080 Wide
TOUCH TYPE	Projected capacitive multi touch
CPU	Intel N97
OS SUPPORTS	Windows 10 64 bit
	Windows 11 64 bit
	Linux
STORAGE	1x 2.5" SSD
SERIAL PORTS	Up to 2x COM Ports
USB PORTS	Up to 2x USB 2.0
LAN PORTS	Up to 2x RJ45 2.5 Gigabit LAN
POWER SYSTEM	24 VDC
	110-230 VAC
OPERATING TEMPERATURE	0-50°C
MATERIAL	AISI 304 Stainless steel
PROTECTION GRADE	Full IP67
SAFETY	CE



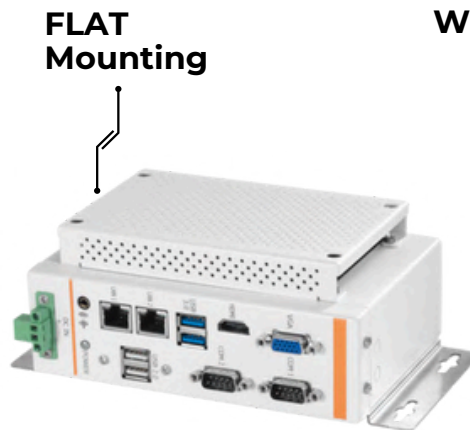
- Latest generation CPU
- Extra compact design
- Internal power supply 24VDC
- Operating temperature 0-50°C
- For DIN rail, inside panel or table mounting



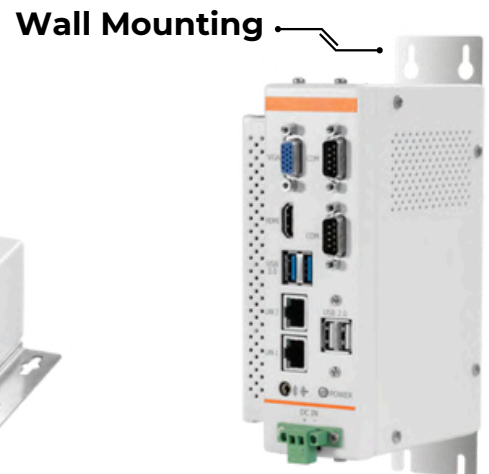
CE ✓RoHS Windows Embedded Linux



DIN Rail Mounting



FLAT Mounting



Wall Mounting

Industrial **BOX PCs** for DIN rail mounting, inside a panel or table. Thanks to their design and extremely flexible configuration, solutions can be obtained for multiple types of use with **CPUs with high computing power**, completely **FANLESS**.

Panel's industrial BOX PCs are **robust and compact solutions** designed to guarantee high performance and offer efficient management of automated processes thanks to their versatility in integrating with complex machinery and systems.

With advanced computing power and support for multiple interfaces, these devices ensure **continuous and uninterrupted operation**, optimizing productivity. Combined with monitors, they are **ideal for applications in sectors such as manufacturing, logistics and automation**, BOX PCs are **easy to customize to meet specific needs**, improving efficiency and time.



PAB223

PAB224

PAB225

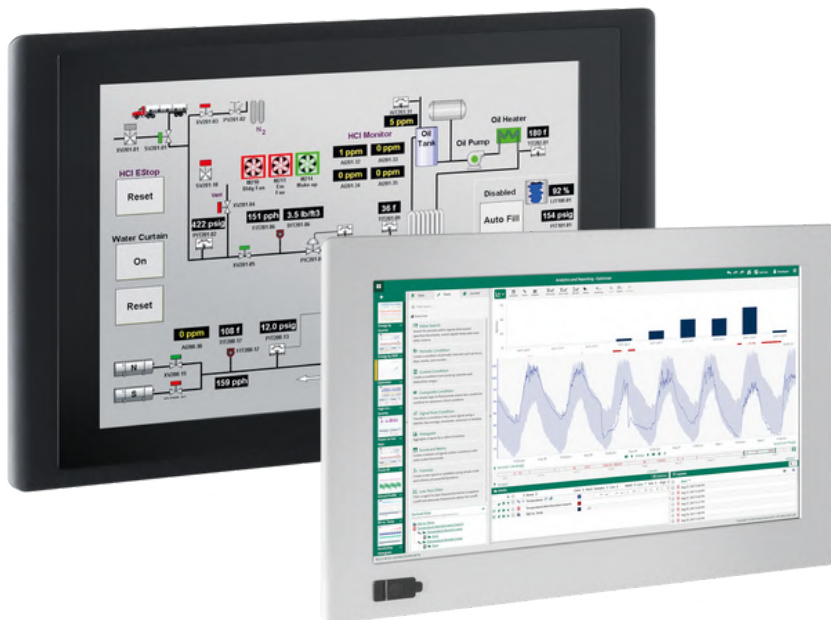
PAB323

ID PRODOTTO				
CPU	Intel Celeron J6412		Intel N97	Intel Core i5-1135G7B
OS SUPPORTS	Windows 10 64 bit Windows 11 64 bit Linux			
STORAGE	1x M.2 SSD 1x 2.5" SSD (optional)		1x M.2 PCIe SSD	1x M.2 SSD 1x 2.5" SSD (Optional) RAID 0/1 option available
EXPANSION SLOTS	1x Mini PCIe full size	N/A	1x Mini PCIe full size 1x Key E (2230)	1x Mini PCIe full size 1x Key E (2230)
SERIAL PORTS	2x RS232/422/485	N/A	2x RS232/422/485 (Optional)	2x RS232/422/485
USB PORTS	4x USB 3.2 2x USB 2.0		2x USB 3.2 4x USB 2.0	4x USB 3.2 2x USB 2.0
AUDIO I/O	1x Line-Out			N/A
VIDEO OUTPUT	2x HDMI			
LAN PORTS	2x RJ45 Gigabit LAN	4x RJ45 Gigabit LAN	2x RJ45 Gigabit LAN	2x RJ45 Gigabit LAN 2x RJ45 Gigabit LAN (Optional)
POWER SYSTEM	24 VDC			
OPERATING TEMPERATURE	0-50°C			
SAFETY	CE			



Capacitive - Resistive Touch Screen

- 12.1" to 21.5" Display
- Wide screen or 4:3 format
- Capacitive or resistive touch screen
- Internal power supply 24VDC or 110-230 VAC
- IP66 protection grade
- Operating temperature 0-50°C
- Customizable panel
- VESA or Panel Mounting



Capacitive
PMG Series



Resistive
PMR Series

Industrial panel mounting monitors with 12.1" to 21.5" wide screen displays with LED backlight and **excellent resolution**. Available with both 24VDC and 230VAC power supply and featuring **high brightness**, a **wide viewing** angle and the possibility of connection via **VGA or DVI port**.

The PMG and PMR series are the ideal solution for supervision and control in even critical industrial environments.

The **PMG** front panel, with IP66 protection rating, is made of black silk-screened tempered glass with an aluminium edge and a multi-touch rear-projected capacitive touch screen.

The **PMR** front panel, in anodized aluminum and with IP66 protection rating, is equipped with a 5-wire resistive touch screen.



PMG3 Series

PMR2 Series

PRODUCT ID		
DISPLAY	12.1"	800x600 1024x768
	15"	1024x768
	15.6"	1366x768 Wide 1920x1080 Wide
	17"	1280x1024
	18.5"	1366x768 Wide 1920x1080 Wide
	21.5"	1920x1080 Wide
TOUCH TYPE	Projected capacitive multi touch	5 Wire resistive touch
FRONT USB PORTS	N/A	1x USB 2.0
POWER SYSTEM	24 VDC 110-230 VAC	
VIDEO INPUT	1x VGA 1x DVI	
OPERATING TEMPERATURE	0-50°C	
FRONTAL PANEL PROTECTION	IP66	
SAFETY	CE	

REMOTED MONITOR

PRG - PRR Series



Capacitive - Resistive Touch Screen

- Network connection up to 100 meters and over
- 12.1" to 21.5" Display
- Capacitive or resistive touch screen
- Internal power supply 24VDC
- IP66 protection grade
- Operating temperature 0-50°C
- Customizable panel
- 24VDC external transmitter for DIN guide mounting



CE ✓RoHS Windows Embedded Linux

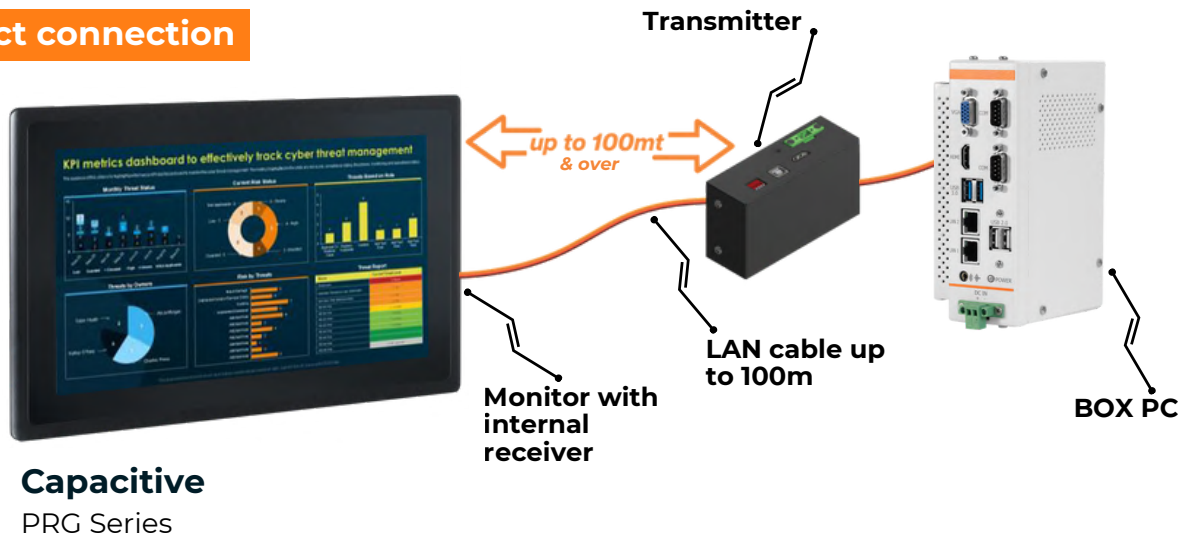


Industrial monitor for panel mounting with remote control system via LAN network with coverage up to **100 meters and over**, LED backlit with excellent resolution. Ideal solution for supervision and control, even in machines or systems where there are many disturbances or where it is necessary to cover very long distances between PC and monitor. Possibility of **connection also through the company network**.

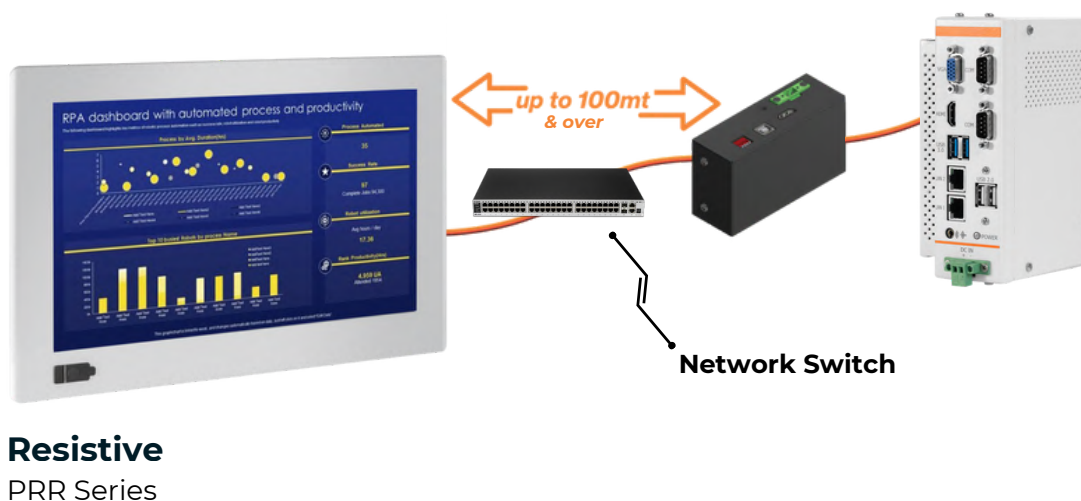
The **PRG** front panel, with **IP66** protection rating, is made of black silk-screened tempered glass with an aluminium edge and a multi-touch rear-projected capacitive touch screen.

The **PRR** front panel, in anodized aluminum and with **IP66** protection rating, is equipped with a 5-wire resistive touch screen.

Direct connection



Connection through the company network



PRG3 Series

PRR2 Series

PRODUCT ID		
DISPLAY	12.1"	800x600
		1024x768
	15"	1024x768
	15.6"	1366x768 Wide
		1920x1080 Wide
	17"	1280x1024
	18.5"	1366x768 Wide
		1920x1080 Wide
	21.5"	1920x1080 Wide
TOUCH TYPE	Projected capacitive multi touch	
FRONT USB PORTS	N/A	
POWER SYSTEM	24 VDC	
REAR INPUT	1x USB 2.0	
VIDEO INPUT	1x LAN	
OPERATING TEMPERATURE	0-50°C	
FRONTAL PANEL PROTECTION	IP66	
SAFETY	CE	



Support and assistance

Our team of experts is always ready to guide you in choosing the solution that best suits your needs, ensuring timely and **personalized assistance at every stage of the process**.

- ✓ The **sales consultancy** is always available to offer you a personalized experience, guiding you in choosing the ideal solution for your industrial needs.
- ✓ The **after-sales technical assistance service** is able to support with professionalism and speed the issues regarding the entire range of Panel products.

With our consultants and dedicated maintenance, you can be sure that your systems will always be perfect for your situation, operational and optimized at their best. We are at your side, before and after the purchase, to guarantee you a worry-free experience.



**Sales
consultancy**
+39 0536 808519
info@panel.it



**Technical
assistance service**
+39 0536 808519
support@panel.it

The background of the entire page is a complex, abstract network of thin grey lines connecting numerous small, semi-transparent grey circles. These circles are distributed across the top and bottom portions of the page, creating a sense of connectivity and digital structure. The central area is left blank to highlight the text.

www.panel.it

FORWARD THINKING



PANEL S.R.L.
Via Madrid 18
41049 Sassuolo, MO

P.I. 03301520361
+39 0536 808519
info@panel.it

www.panel.it

The information given in this document contains only descriptions and performance features, which may not always correspond to what is described or may change due to product developments. Any requested information is binding only when expressly agreed in terms of contracts.

All specifications are subject to change without prior notice. Names and labels mentioned may be registered trademarks owned by Panel S.r.l. or supplier companies, whose use by third parties could violate the rights of the owner.